

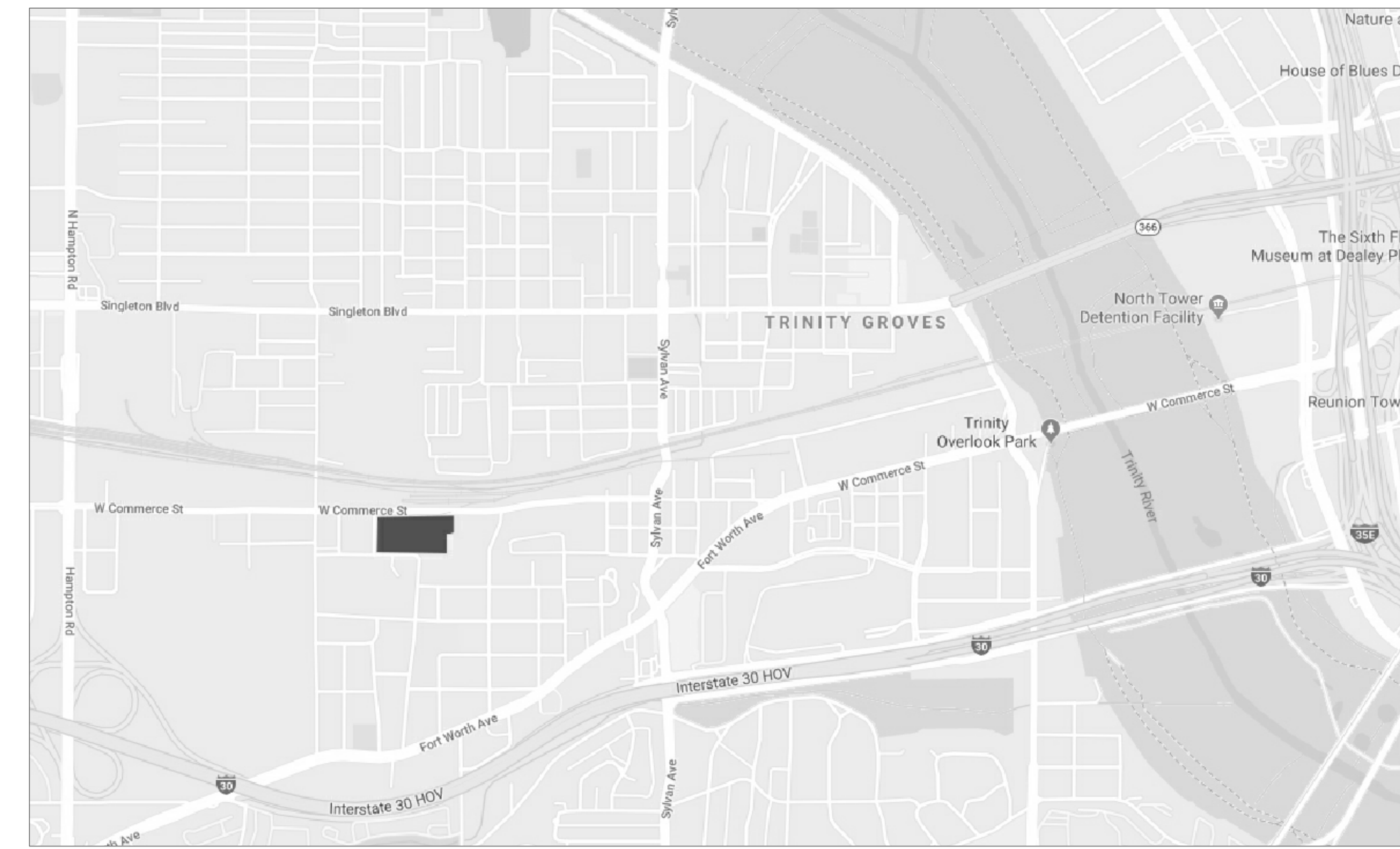
OMNIPLAN

1845 Woodall Rodgers Freeway, Suite 1600
Dallas, Texas 75201

Main 214.826.7080
www.omniplan.com
Copyright © 2020

SITE AND ZONING INFORMATION:

TOTAL SITE AREA	8.716 ACRES
LAND USE	MULTIFAMILY, RETAIL AND PERSONAL SERVICES, OFFICE
FRONT SETBACK: W. COMMERCE	15 FT.
FRONT SETBACK: NEAL	15 FT.
FRONT SETBACK: SEALE	15 FT.
SIDE SETBACK: EAST, SOUTH	10 FT.
MAX. DENSITY	MAX. 65 UNITS PER ACRE
MAX. NON-RESIDENTIAL FAR	0.8
MAX BUILDING HEIGHT	85 FT.
MAX. LOT COVERAGE	80%

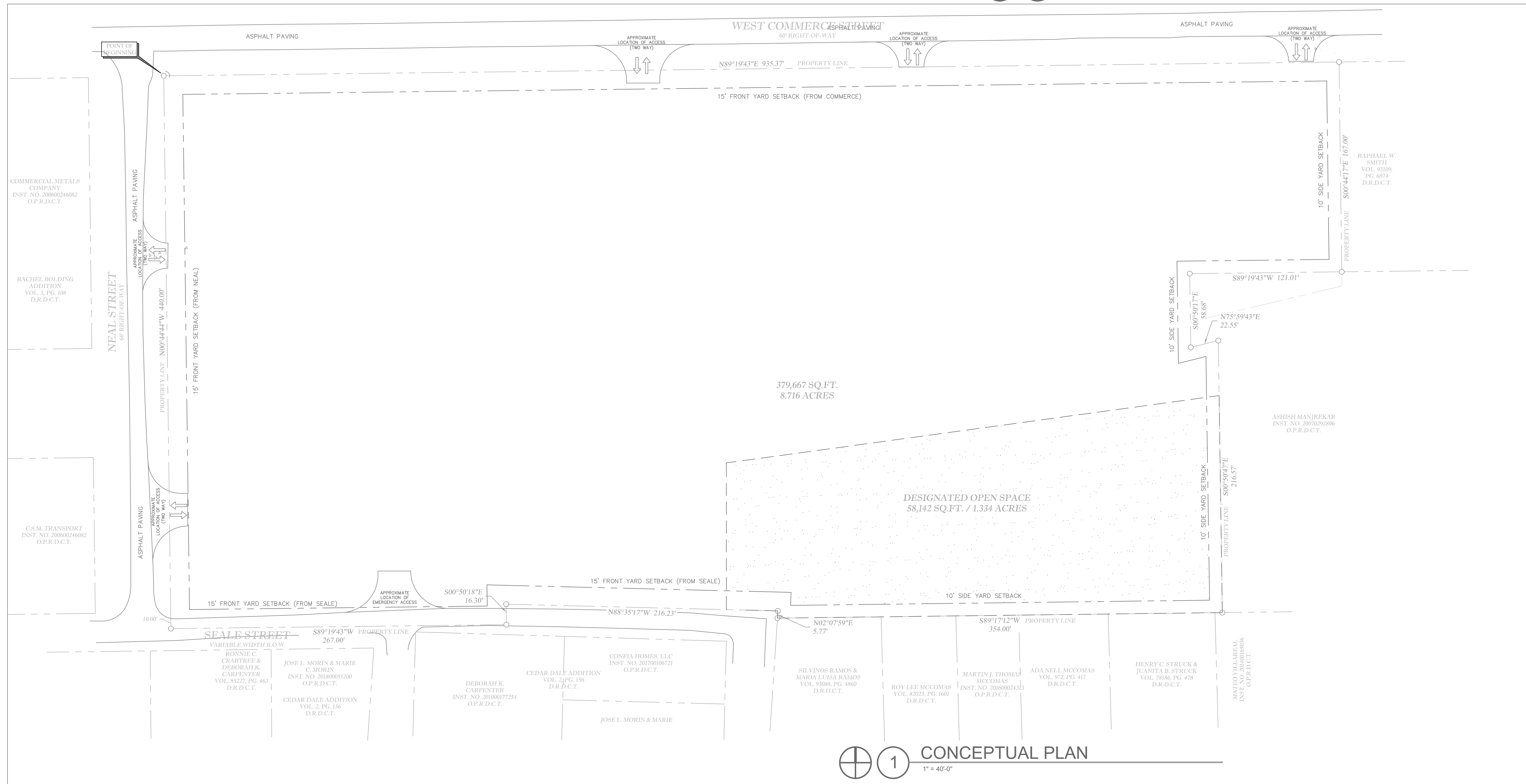


2 VICINITY MAP
SCALE: NTS

THIS DRAWING IS IN PROGRESS AND IS FOR INTERIM REVIEW ONLY. IT IS NOT FOR REGULATORY APPROVAL, PERMITTING, OR CONSTRUCTION.

NAME: JAMES TIPTON HOUSEWRIGHT
TEXAS REG.: 8388-0
DATE: JANUARY 02, 2020

01.02.2020



1400 W. COMMERCE

No.	Date	Description
01	10.08.2019	ISSUED FOR REVIEW
02	10.18.2019	ISSUED FOR REVIEW
03	01.02.2020	ISSUED FOR REVIEW

PROJECT NO: 319082
DRAWN BY: STL
CHECKED BY: STL

CONCEPTUAL PLAN

JANUARY 02, 2020